

---

Town Hall, High Street, Corsham, Wiltshire SN13 0EZ

Tel: 01249 702130

Email: [towncouncil@corsham.gov.uk](mailto:towncouncil@corsham.gov.uk)

[www.corsham.gov.uk](http://www.corsham.gov.uk)

29 June 2017

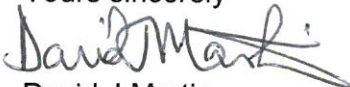
To: All Members of the Property and Amenities Committee: Councillors S Abbott, Ms L Bray, Mrs K Duckhouse, N Farmer, C Fuller, D Jones, N Pocock and R Taylor.

All other Members of the Council for information.

Dear Councillor

The next meeting of the Property and Amenities Committee will be held in the Town Hall on Wednesday 5 July 2017 commencing at 7.30pm.

Yours sincerely



David J Martin  
CHIEF EXECUTIVE

### AGENDA

1. Apologies.
2. Public Question Time and Petitions.
3. Declarations of Interest.

To receive any Declaration(s) of Interest under Corsham Town Council's Code of Conduct issued in accordance with the Localism Act 2011.

4. Matters Arising from the Minutes of the Property and Amenities Committee meeting held on 31 May 2017 – *for information only*.
5. Reports from representatives appointed to Outside Bodies.
6. Parking and Waiting Restrictions (*Minute P&A 36/16 and others*) – Wiltshire Council's consultation on the new/amended parking and waiting restrictions is underway, with comments due by 10 July 2017 (see attached). Most of the schemes have previously been agreed by the Town Council but there are four new proposals for consideration:
  - i) Drawing no. DC29 Arnolds Mead – The restriction within the cul-de-sac has been approved by the Town Council previously, the addition is the proposed restriction that runs around the corner – *for comment*.

- ii) Drawing no. DD27 Park Lane – The proposed restriction opposite the entrance to Purleigh Road – *for comment*.
  - iii) Drawing no. DH28 Edinburgh Way, Leafield Industrial Estate – The proposed restrictions at the junction with Leafield Way – *for comment*.
  - iv) Drawing no. 2016\_17/CORS/WR/Hastings, Hastings Road/Station Road – the proposed restriction at the junction with Hastings Road – *for comment*.
7. Installation of Pedestrian Crossing, Westwells Road – Consultation has started on the proposal to install a pedestrian crossing on Westwells Road. Details of the project are attached and responses are due by 24 July 2017 – *for comment*.
  8. Concerns About Congestion Around MOD Corsham – Concerns have been raised about the volume of traffic entering MOD Corsham at the peak period of 8am to 9am, weekdays. The congestion extends to Bradford Road, Leafy Lane, Park Lane and some of the minor roads nearby. As the issue crosses Box and Corsham parishes, it has been suggested that the two local councils make a joint approach to MOD Corsham to try to find a way to alleviate the problems – *for consideration*.
  9. Community Area Transport Group Issues Update (*Minute P&A 8/17*) – The Town Council's views on the following issues have been noted by the CATG and their actions are as follows:
    - Issue 5277 – Improvements to the junction of Ladbrook Lane with the B3353: Highway engineers to investigate – *for information*.
    - Issue 5290 – Improvements to the junction of Greenhill Lane and Westwells: Highway engineers to investigate – *for information*.
    - Issue 5295 – Provision of No Entry signs, Pool Green: Highway engineers to check Traffic Regulation Order and amend signs if required – *for information*.
    - Issue 5353 – Improvements and warning signs Westwells: Highway engineers to investigate – *for information*.
  10. Strategic Plan Monitoring and Evaluation (*Minute P&A 15/17 and others*) – The attached Monitoring and Evaluation sheets provide details of all the actions within the Strategic Plan themes covered by the Property and Amenities Committee (along with related actions which are monitored by other Committees/Council for information) – *for information and comment*.
  11. Transport Monitoring (*Minute P&A 16/17 and others*) – The Transport Monitoring Sheet for Corsham is attached – *for information and comment*.
  12. Annual Site Visits 2017 – Notes from the first visit held on 19 June 2017 are attached. The second of the annual site visits by Town Councillors will take place on 24 July 2017. Full details are attached – *for information*.
  13. War Memorial Listing (*Minute P&A 11/17*) – Further to the previous meeting, Historic England has amended their plan of the site to show the correct position of the memorial. The memorial has been awarded a Grade 2 listing – *for information*.

WILTSHIRE COUNCIL

ROAD TRAFFIC REGULATION ACT 1984  
TRAFFIC MANAGEMENT ACT 2004

THE COUNTY OF WILTSHIRE (CORSHAM) (PROHIBITION AND RESTRICTION OF  
WAITING, TAXI RANK CLEARWAYS AND ON STREET PARKING)  
CONSOLIDATION ORDER 2017

NOTICE IS HEREBY GIVEN THAT Wiltshire Council proposes to make the above Order under the Road Traffic Regulation Act 1984 and the Traffic Management Act 2004 to revoke The County of Wiltshire (Corsham) (Prohibition and Restriction of Waiting, Taxi Rank Clearways and On Street Parking) Consolidation Order 2009, with amendments 1, 2, 3, 4 and 5, and re-enact it in the above Order and to include additional restrictions as follows:

a) To introduce **No Waiting at any time** on the following lengths of roads:

**Arnolds Mead** – east side – from a point 12 metres west of its junction with Newlands Road for a distance of 14 metres in a northerly direction

**Arnolds Mead** – north side – from a point 16 metres east of its junction with Meriton Avenue for a distance of 40 metres in a north easterly direction

**Edinburgh Way** – south side – from its junction with Leafield Way for a distance of 27 metres in an easterly direction

**Edinburgh Way** – north side – from its junction with Leafield Way for a distance of 43 metres in an easterly direction

**Freestone Way** – both sides – from its junction with Valley Road for a distance of 10 metres in a westerly direction

**Hastings Road** – both sides – from its junction with South Street for a distance of 5 metres in an easterly direction

**High Street** – west side – from a point 40 metres north of its junction with Post Office Lane for a distance of 6 metres in a northerly direction

**Kings Avenue** – east side – from its junction with Priory Street for a distance of 11 metres in a north easterly direction

**Kings Avenue** – south east side – from a point 16 metres south west of its junction with The Lagger to a point 16 metres north east of that junction

**Leafield Way** – east side – from a point 15 metres north of its junction with Edinburgh Way to a point 17 metres south of that junction

**Lypiatt Road** – west side – from a point 12 metres north of its junction with Tellcroft Road to a point 11 metres south of that junction

**Lypiatt Road** – south side – from its junction with Pound Pill for a distance of 30 metres in a westerly direction

**Meriton Avenue** – west side – from a point 120 metres north of its junction with Pickwick Road for a distance of 9 metres in a northerly direction

**Paul Street** – both sides – from a point 193 metres south of its junction with Pickwick Road to a point 209 metres south of that junction to include the turning head

**Park Lane** – north side – from a point 88 metres south west of its junction with Bath Road to a point 113 metres south west of that junction

**Potley Lane** – east side – from the centreline of the railway bridge for a distance of 59 metres in a southerly direction

**Potley Lane** – west side – from the centreline of the railway bridge for a distance of 37 metres in a southerly direction

**Pound Pill (School Access Road)** – north side – from a point 10 metres east of its junction with Pound Pill for a distance of 16 metres in an easterly direction (for administrative purposes only with no changes to be made on the ground)

**Pound Pill (School Access Road)** – north side – from a point from a point 33 metres east of its junction with Pound Pill for a distance of 23 metres in an easterly direction (for administrative purposes only with no changes to be made on the ground)

**Priory Street** – north side – from its junction with Kings Avenue for a distance of 25 metres in a south easterly direction

**Priory Street** – north side – from a point 58 metres east of its junction with Newlands Road for a distance of 10 metres

**Priory Street** – north side – from a point 94 metres east of its junction with Newlands Road for a distance of 10 metres

**Priory Street** – south side – from its junction with Bath Road for a distance of 55 metres in a south easterly direction

**Prospect** – west side – from its junction with Lypiatt Road for a distance of 63 metres in a southerly direction

**South Street** – both sides – from a point 5 metres north of its junction with Hastings Road to a point 5 metres south of that junction

**Station Road** – south side – from its junction with South Street for a distance of 20 metres in an easterly direction

**Telicroft Close** – north sides – from its junction with Lypiatt Road for a distance of 11 metres in a westerly direction

**The Lagger** – both sides – from its junction with Kings Avenue to a point 14 metres south east of that junction

**Valley Road** – both sides – from a point 15 metres north of its junction with Freestone Way to a the centreline of the railway bridge

b) To extend **No Waiting at any time** on the following lengths of roads:

**Beechfield Road** – north side – from a point 17 metres north west of its junction with Beechfield Road (Access Road to Springfield Community Campus) for a distance of 54 metres

**Lacock Road** – south side – from a point 230 metres east of its junction with South Place for a distance of 135 metres in a north easterly direction

**Methuan Park (Access Road to Next Store)** – both sides – from its junction with Methuen Park for a distance of 23 metres

**Pound Pill** – east side – from a point 70 metres south of its junction with South Place for a distance of 2 metres in a southerly direction

**Pound Pill** – east side – from a point 82 metres south of its junction with South Place for a distance of 2 metres in a southerly direction

**Pound Pill** – east side – from a point 105 metres south of its junction with South Place for a distance of 4 metres

**Priory Street** – north side – from a point 88 metres south east of its junction with Kings Avenue for a distance of 34 metres in a north westerly direction

**Stokes Road** – north side – from a point 10 metres north east of its junction with Station Road for a distance of 20 metres in an easterly direction

**Station Road** – north side - from a point 19 metres north east of its junction with South Street for a distance o f 52 metres

**Station Road** – south side – from a point 38 metres west of its junction with Stokes Road for a distance of 13 metres in a westerly direction

**The Tynings** – west side – from a point 154 metres south of its junction with Pickwick Road to a point 166 metres south of that junction

c) To introduce **No Waiting Monday to Friday 8am – 6pm** on the following length of road:

**Station Road** – north side – from a point 25 metres north east of its junction with Stokes Road for a distance of 38 metres in a south westerly direction

d) To extend **Parking Monday to Saturday 9am – 6pm 30 minutes No return within 1 hour** on the following length of road:

**High Street** – west side – from a point 51 metres north of its junction with Post Office Lane for a distance of 15 metres in a southerly direction

e) To revoke **No Waiting at any time** on the following length of road:

**Priory Street** – north side – from a point 33 metres east of its junction with Newlands Road for a distance of 15 metres in an easterly direction

Deposit copies of the Order, plans and Statement of the Council's Reasons for proposing to make the Order may be inspected at the offices of Wiltshire Council, County Hall, Bythesea Road, Trowbridge during normal office hours. Details of the proposed scheme may be seen at Corsham Library, Springfield Community Campus, Beechfield Road, Corsham during the hours of 9am to 7pm Monday and Friday and 9am to 5pm Tuesday, Wednesday, Thursday and Saturday until 10<sup>th</sup> July 2017. Documents can also be viewed online at [www.wiltshire.gov.uk/troconsultations.htm](http://www.wiltshire.gov.uk/troconsultations.htm)

Comments on the proposal together with the reasons for which they are made should be sent in writing or via the website to reach the Sustainable Transport Group by 10<sup>th</sup> July 2017 quoting reference LJB/TRO/CORMtrev.

Sustainable Transport Group, County Hall, Bythesea Road, Trowbridge BA14 8JN

16<sup>th</sup> June 2017

**WILTSHIRE COUNCIL**

**ROAD TRAFFIC REGULATION ACT 1984**  
**TRAFFIC MANAGEMENT ACT 2004**

**THE COUNTY OF WILTSHIRE (CORSHAM) (PROHIBITION AND RESTRICTION**  
**OF WAITING, TAXI RANK CLEARWAYS AND ON STREET PARKING)**  
**CONSOLIDATION ORDER 2017**

**Statement of Wiltshire Council's reasons for proposing**  
**to make the Order**

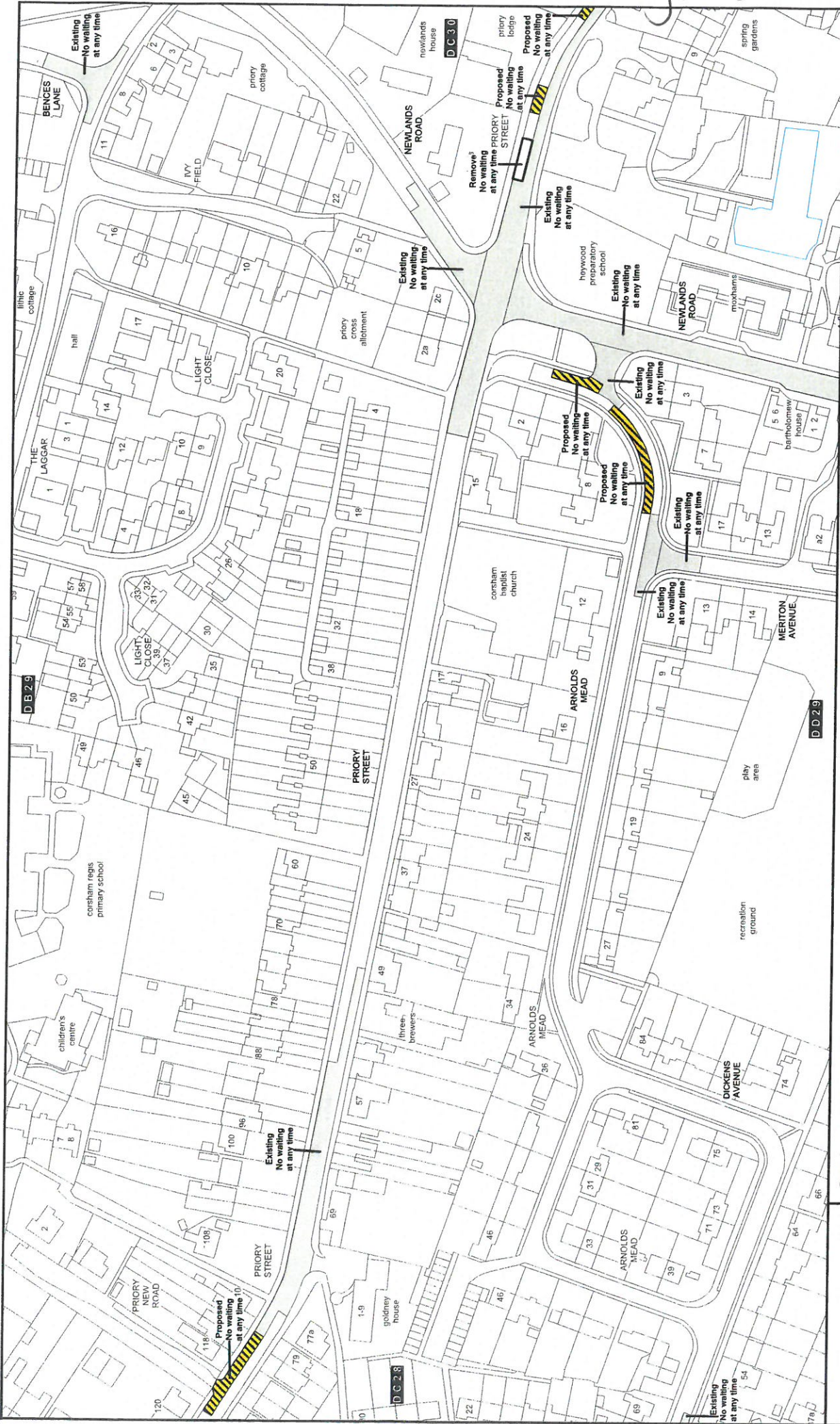
To rationalise parking restrictions in the Town of Corsham.

**RTRA 1984 Section 1 (1)**

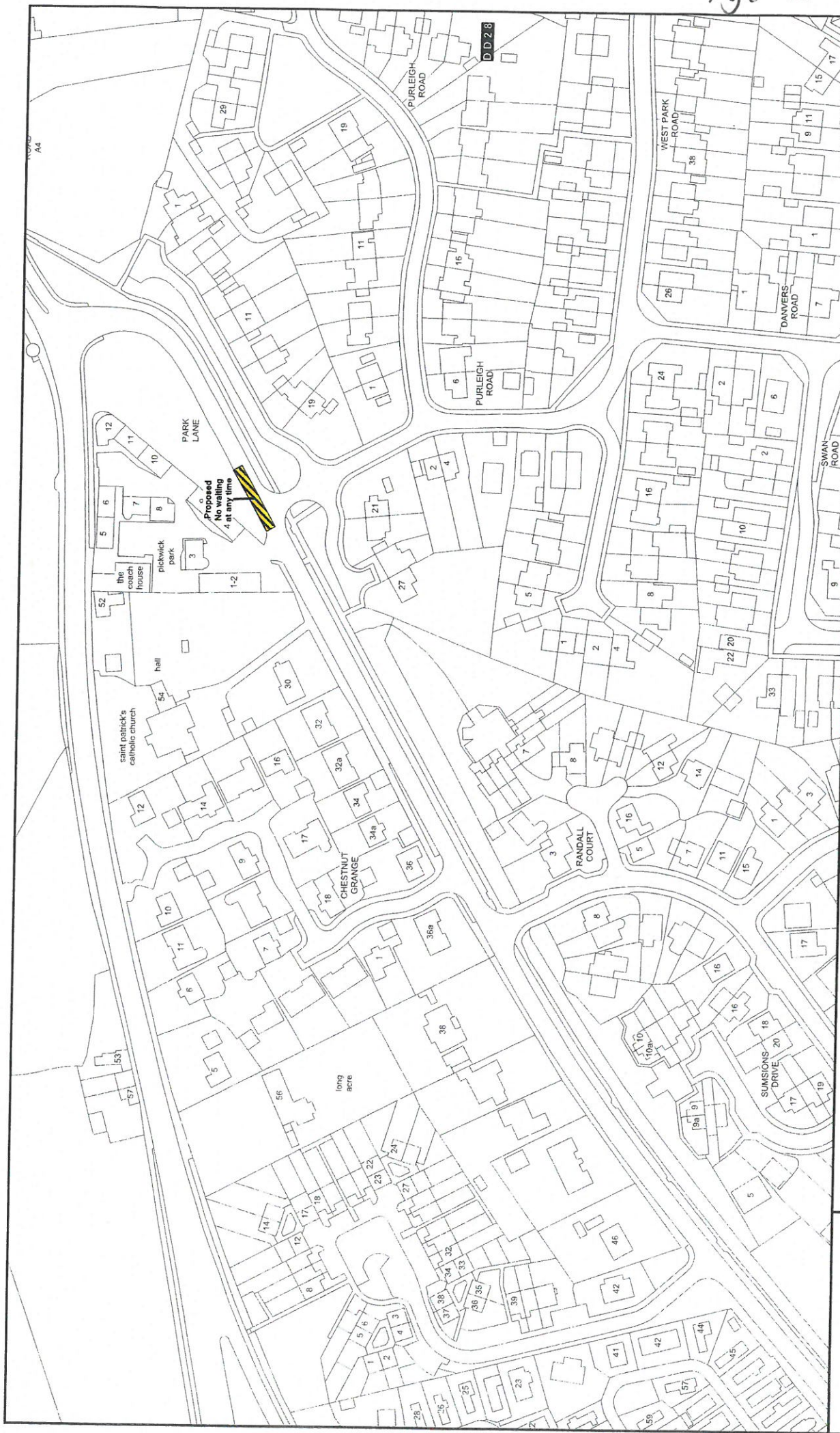
- (a) For avoiding danger to persons or other traffic using the road or any other road or for preventing the likelihood of any such danger arising.

**RTRA 1984 Sections 32 and 35**

For the purpose of relieving or preventing congestion.

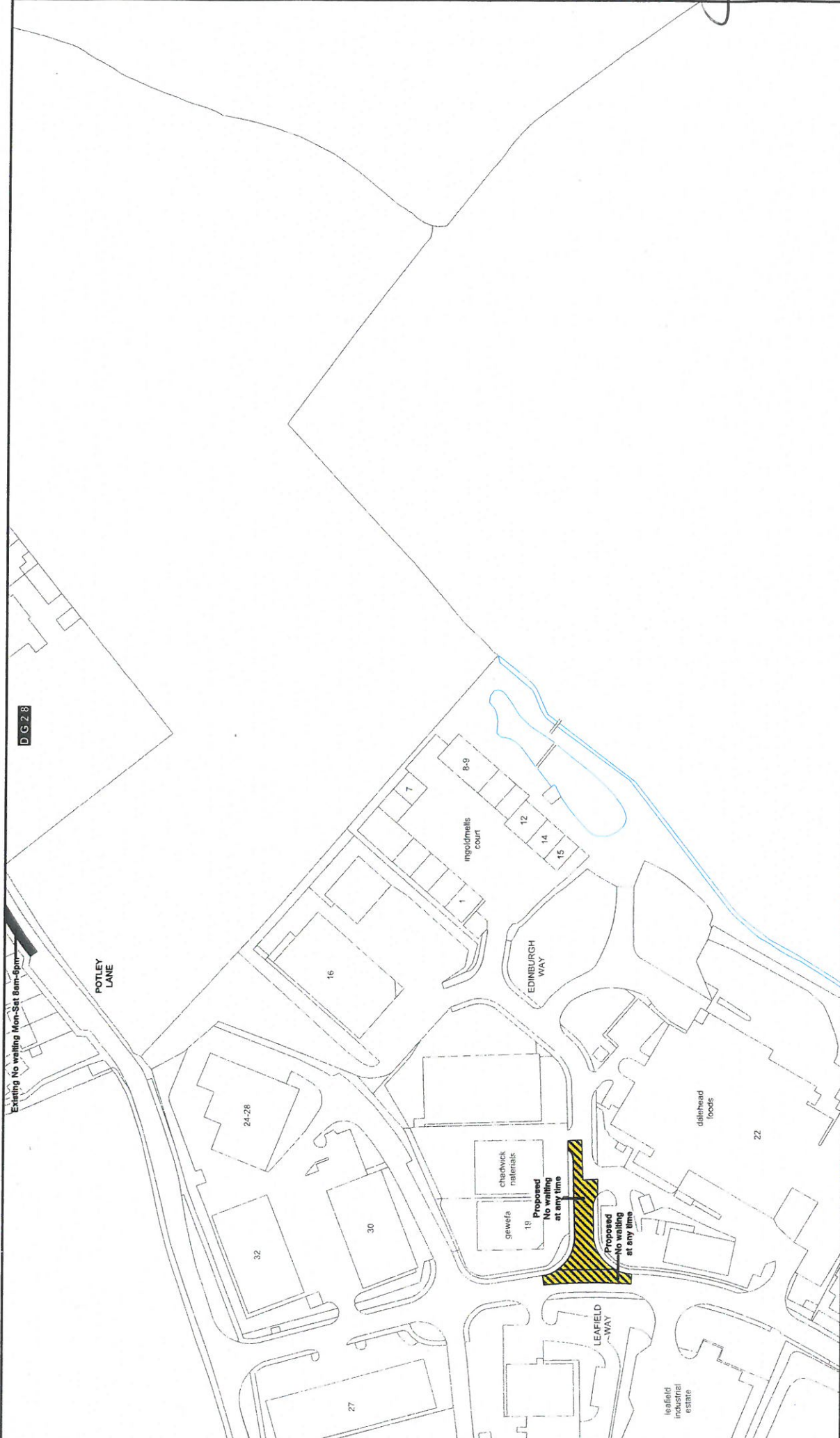


<b>Wiltshire Council</b> Where everybody matters		<b>Corsham review 2016/17</b> Proposed restrictions – Arnolds Mead and Priory Street		Crown copyright and database rights 2017 Ordnance Survey 100049050		SCALE <b>1: 1250 @ A3</b>		
Wiltshire Council County Hall, Bythesea Road, Trowbridge, Wiltshire. BA14 8JN		<b>KEY</b>		<p>  PROPOSED PARKING   PROPOSED RESIDENT PARKING   PROPOSED PAY AND DISPLAY   PROPOSED DISABLED PARKING   PROPOSED DOCTOR PARKING   PROPOSED MOTORCYCLE PARKING   PROPOSED LOADING   PROPOSED NO WAITING AND NO LOADING   PROPOSED NO WAITING AND NO LOADING AT ANY TIME   PROPOSED MULTIPLE RESTRICTIONS   PROPOSED NO WAITING   PROPOSED NO WAITING AND NO LOADING   PROPOSED NO WAITING AND NO LOADING AT ANY TIME   PROPOSED PEDESTRIAN ZONE   PROPOSED TAX CLEARWAY   PROPOSED CLEARWAY   PROPOSED ZONE EXTENSION   PROPOSED ZONE ROAD   EXISTING RESTRICTIONS   REVOKED RESTRICTIONS   EXPERIMENTAL RESTRICTIONS   ZONE BOUNDARY         </p>		DATE <b>16/06/2017</b>	FILE <b>CORM2016TOWN</b>	MAP SCHEDULE <b>DC29</b>

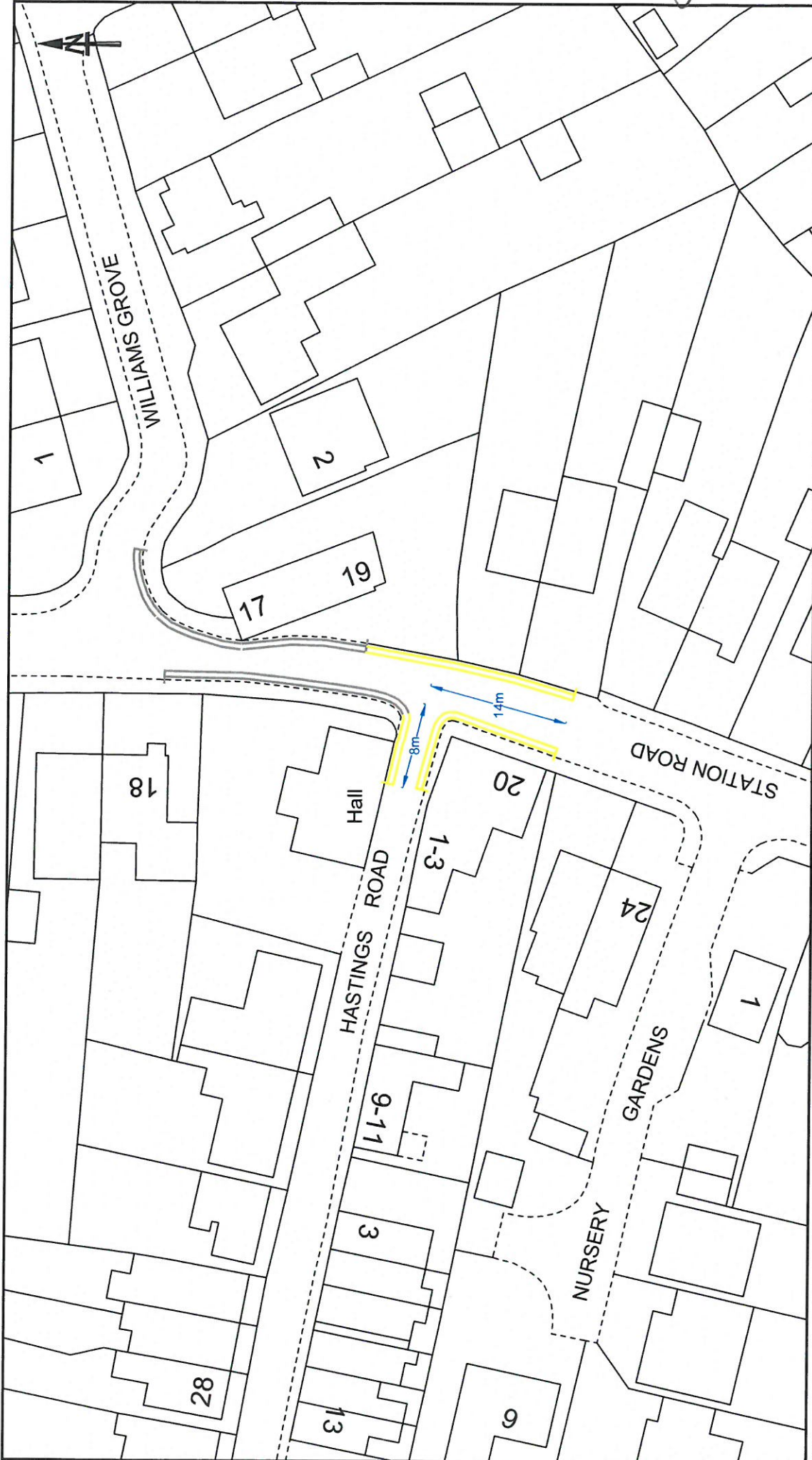


<p><b>Wiltshire Council</b> What everybody matters</p> <p>Wiltshire Council County Hall, Bythesea Road, Trowbridge, Wiltshire. BA14 8JN</p>		<p><b>Corsham review 2016/17</b> <b>Proposed restrictions – Park Lane</b></p>		<p>Crown copyright and database rights 2017 Ordnance Survey 100049050</p>		<p>SCALE <b>1: 1250 @ A3</b></p>
<p><b>KEY</b></p> <ul style="list-style-type: none"> <li> PROPOSED DISABLED PARKING</li> <li> PROPOSED DOCTOR PARKING</li> <li> PROPOSED RESIDENT PARKING</li> <li> PROPOSED MOTORCYCLE PARKING</li> <li> PROPOSED PAY AND DISPLAY</li> <li> PROPOSED NO WAITING AND NO LOADING</li> <li> PROPOSED NO WAITING AND NO LOADING AT ANY TIME</li> <li> PROPOSED NO WAITING AND NO LOADING AT ANY TIME</li> <li> PROPOSED MULTIPLE RESTRICTIONS</li> <li> PROPOSED TAJ CLEARWAY</li> <li> PROPOSED CLEARWAY</li> <li> PROPOSED ZONE EXTENSION</li> <li> PROPOSED PEDESTRIAN ZONE</li> <li> EXISTING RESTRICTIONS</li> <li> REVOKED RESTRICTIONS</li> <li> EXPERIMENTAL RESTRICTIONS</li> <li> ZONE BOUNDARY</li> </ul>		<p>DATE <b>16/06/2017</b></p>	<p>FILE <b>CORM2016TOWN</b></p>	<p>N W E S</p>	<p>MAP SCHEDULE <b>DD27</b></p>	





		<b>Corsham review 2016/17</b> <b>Proposed restrictions – Edinburgh Way and Leafield Way</b>		SCALE 1: 1250 @ A3
Wiltshire Council County Hall, Bythesea Road, Trowbridge, Wiltshire. BA14 8JN		Crown copyright and database rights 2017 Ordnance Survey 100049050		DATE 16/06/2017
<b>KEY</b>		PROPOSED TAXI CLEARWAY PROPOSED CLEARWAY PROPOSED ZONE EXTENSION PROPOSED ZONE ROAD		FILE CORM2016TOWN
PROPOSED DISABLED PARKING PROPOSED DOCTOR PARKING PROPOSED MOTORCYCLE PARKING PROPOSED LOADING		PROPOSED NO WAITING PROPOSED NO WAITING AND NO LOADING PROPOSED NO WAITING AND NO LOADING AT ANY TIME PROPOSED MULTIPLE RESTRICTIONS		N W E S
PROPOSED PARKING PROPOSED RESIDENT PARKING PROPOSED PAY AND DISPLAY		PROPOSED NO WAITING AT ANY TIME PROPOSED NO WAITING AT ANY TIME AND NO LOADING PROPOSED NO WAITING AT ANY TIME AND NO LOADING AT ANY TIME PROPOSED PEDESTRIAN ZONE		MAP SCHEDULE DH28
		PROPOSED NO WAITING AT ANY TIME AND NO LOADING PROPOSED NO WAITING AT ANY TIME AND NO LOADING AT ANY TIME PROPOSED NO WAITING AT ANY TIME AND NO LOADING AT ANY TIME PROPOSED PEDESTRIAN ZONE		EXISTING RESTRICTIONS REVOKED RESTRICTIONS EXPERIMENTAL RESTRICTIONS ZONE BOUNDARY



<p><b>Wiltshire Council</b> Where everybody matters</p> <p><b>Traffic &amp; Network Management</b> County Hall, Byfleet Road, Trowbridge Wiltshire, BA14 8JD Tel: 0300 460100 Website: www.wiltshire.gov.uk</p>		<p>201617 WAITING RESTRICTION REVIEW CORSHAM &amp; CORSHAM WITHOUT</p>	
<p>This map is reproduced from Ordnance Survey material with the permission of Ordnance Survey on behalf of the Controller of Her Majesty's Stationery Office. Copyright © 2017 Ordnance Survey. All rights reserved. Unauthorised reproduction in any form is prohibited and may lead to prosecution or Civil Proceedings. Wiltshire Council (1004650) 2017</p>		<p>DRAWING TITLE HASTINGS ROAD PROPOSED INTERSECTION OF NO WAITING AT ANY TIME RESTRICTIONS</p>	
<p>REV: 0117 JDF REV: 0115 JDF REV: 0114 JDF REV: 0113 JDF REV: 0112 JDF REV: 0111 JDF REV: 0110 JDF REV: 0109 JDF REV: 0108 JDF REV: 0107 JDF REV: 0106 JDF REV: 0105 JDF REV: 0104 JDF REV: 0103 JDF REV: 0102 JDF REV: 0101 JDF REV: 0100 JDF REV: 0099 JDF REV: 0098 JDF REV: 0097 JDF REV: 0096 JDF REV: 0095 JDF REV: 0094 JDF REV: 0093 JDF REV: 0092 JDF REV: 0091 JDF REV: 0090 JDF REV: 0089 JDF REV: 0088 JDF REV: 0087 JDF REV: 0086 JDF REV: 0085 JDF REV: 0084 JDF REV: 0083 JDF REV: 0082 JDF REV: 0081 JDF REV: 0080 JDF REV: 0079 JDF REV: 0078 JDF REV: 0077 JDF REV: 0076 JDF REV: 0075 JDF REV: 0074 JDF REV: 0073 JDF REV: 0072 JDF REV: 0071 JDF REV: 0070 JDF REV: 0069 JDF REV: 0068 JDF REV: 0067 JDF REV: 0066 JDF REV: 0065 JDF REV: 0064 JDF REV: 0063 JDF REV: 0062 JDF REV: 0061 JDF REV: 0060 JDF REV: 0059 JDF REV: 0058 JDF REV: 0057 JDF REV: 0056 JDF REV: 0055 JDF REV: 0054 JDF REV: 0053 JDF REV: 0052 JDF REV: 0051 JDF REV: 0050 JDF REV: 0049 JDF REV: 0048 JDF REV: 0047 JDF REV: 0046 JDF REV: 0045 JDF REV: 0044 JDF REV: 0043 JDF REV: 0042 JDF REV: 0041 JDF REV: 0040 JDF REV: 0039 JDF REV: 0038 JDF REV: 0037 JDF REV: 0036 JDF REV: 0035 JDF REV: 0034 JDF REV: 0033 JDF REV: 0032 JDF REV: 0031 JDF REV: 0030 JDF REV: 0029 JDF REV: 0028 JDF REV: 0027 JDF REV: 0026 JDF REV: 0025 JDF REV: 0024 JDF REV: 0023 JDF REV: 0022 JDF REV: 0021 JDF REV: 0020 JDF REV: 0019 JDF REV: 0018 JDF REV: 0017 JDF REV: 0016 JDF REV: 0015 JDF REV: 0014 JDF REV: 0013 JDF REV: 0012 JDF REV: 0011 JDF REV: 0010 JDF REV: 0009 JDF REV: 0008 JDF REV: 0007 JDF REV: 0006 JDF REV: 0005 JDF REV: 0004 JDF REV: 0003 JDF REV: 0002 JDF REV: 0001 JDF REV: 0000 JDF</p>		<p>DRAWING PURPOSE DRAFT</p>	
<p>NOTES</p>		<p>SCALES: NOT TO SCALE DRAWING No: 2016_17_CORSHAM_WAITING SHEET SIZE: A3 REVISION: A</p>	

Agenda item 7.

**WILTSHIRE COUNCIL**

**ROAD TRAFFIC REGULATION ACT 1984**

**PEDESTRIAN CROSSING - WESTWELLS ROAD, CORSHAM AND BOX**

NOTICE IS HEREBY GIVEN that Wiltshire Council in exercise of its powers under Section 23 of the Road Traffic Regulation Act 1984 proposes the installation of a "PUFFIN" (Pedestrian User-Friendly Intelligent) Crossing, a form of traffic signal-controlled crossing in **Westwells Road, Corsham and Box** at a point approximately 281 metres south east of its roundabout junction with Park Lane.

A copy of the plan showing the location of the crossing may be inspected at the offices of Wiltshire Council, County Hall, Bythesea Road, Trowbridge during normal office hours. Details of the proposed scheme may be seen at Corsham Library, Springfield Community Campus, Beechfield Road, Corsham between the hours of 9am to 7pm Monday and Friday and 9am to 5pm Tuesday, Wednesday, Thursday and Saturday until 24<sup>th</sup> July 2017. Documents can also be viewed online at [www.wiltshire.gov.uk/troconsultations.htm](http://www.wiltshire.gov.uk/troconsultations.htm)

Comments on the proposal together with the reasons for which they are made, should be sent in writing or via the website to reach the Sustainable Transport Group by 24<sup>th</sup> July 2017 quoting reference LJB/TRO/CORM/HY296.

Sustainable Transport Group, County Hall, Bythesea Road TROWBRIDGE BA14 8JN

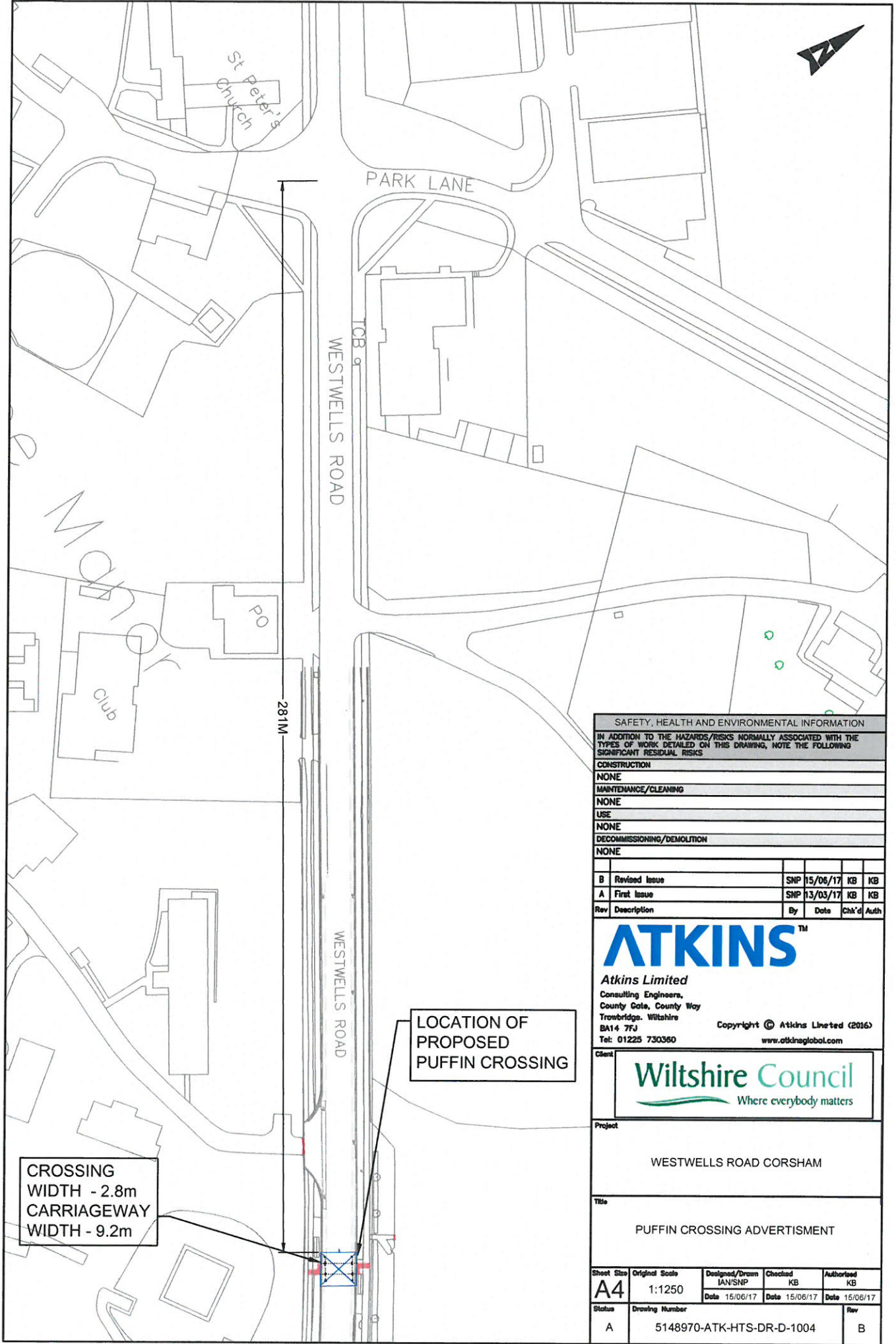
30<sup>th</sup> June 2017

Status	A
Drawing Number	5148970-ATK-HTS-DR-D-1003
Rev	B

DO NOT SCALE



File: 5148970-ATK-HTS-DR-D-1001.dwg  
 Date: Jun 15, 2017 - 2:52pm  
 Plotted by: anir5214



CROSSING  
 WIDTH - 2.8m  
 CARRIAGEWAY  
 WIDTH - 9.2m

LOCATION OF  
 PROPOSED  
 PUFFIN CROSSING

SAFETY, HEALTH AND ENVIRONMENTAL INFORMATION				
IN ADDITION TO THE HAZARDS/RISKS NORMALLY ASSOCIATED WITH THE TYPES OF WORK DETAILED ON THIS DRAWING, NOTE THE FOLLOWING SIGNIFICANT RESIDUAL RISKS				
CONSTRUCTION				
NONE				
MAINTENANCE/CLEANING				
NONE				
USE				
NONE				
DECOMMISSIONING/DEMOLITION				
NONE				
Rev	Description	By	Date	Chk'd/ Auth
B	Revised Issue	SNP	15/06/17	KB KB
A	First Issue	SNP	13/03/17	KB KB

**ATKINS**<sup>TM</sup>  
 Atkins Limited  
 Consulting Engineers,  
 County Gate, County Way  
 Trowbridge, Wiltshire  
 BA14 7FJ  
 Tel: 01225 730360  
 Copyright © Atkins Limited (2016)  
 www.atkinsglobal.com

Client  
  
 Wiltshire Council  
 Where everybody matters

Project  
 WESTWELLS ROAD CORSHAM

Title  
 PUFFIN CROSSING ADVERTISEMENT

Sheet Size	Original Scale	Designed/Drawn	Checked	Authorised
A4	1:1250	IAN/SNP	KB	KB
Status	Drawing Number	Date	Date	Date
A	5148970-ATK-HTS-DR-D-1004	15/06/17	15/06/17	15/06/17
Rev				

Agenda item 10.

Corsham Town Council  
Strategic Plan Cost Estimates and Priorities - Update for July 2017  
Action Plan: Monitoring and Evaluation (Property and Amenities)

Theme: Managed Development Action	Budget		Actual	Evaluation Measures	Priority (1 to 3)	Timeframe (yr 1 to 5)	Status	Comments
	From	To						
Review and improve the pricing structure for off-street parking to encourage shoppers and visitors	£0	£23,000	Included in 'Open to Business'	Sensible pricing structure in place	1	1	Completed. Reviewed summer '15	CTC led into WC parking review. New charges from Nov '15. Additional Free Parking Days being purchased to encourage shoppers Dec '15 and Apr '16. Free Parking Days held Oct '16 and booked for Jan, Apr and Jul '17
Review Traffic Regulation Orders and decide where they should be increased, amended or removed	£0	£500	£0	Review completed	2	4	Completed	Waiting restriction requests reviewed by P&A Cttee each January. Included in WC's programme for 2016-18. P&A Cttee approved draft plans Sept '16. Further sites added (Leafield, Park Lane and Priory St) Jan '17. WC due to advertise Traffic Regulation Order from Mar '17. Being advertised Jun/Jul '17
Monitor heavy traffic movement through the town centre and press for necessary improvements	£0	£5,000		Monitoring completed and results published	3	5		
Monitor and review bus routes and usage and encourage service providers to ensure the services meet the identified needs	£0	£500		Review by Property and Amenities Committee at least annually	3	4	Started	Review once impact of WC public transport funding cuts is known. WC consulted on bus services until Apr '16. Faresaver running the 231 and 10 services from Apr '16. Faresaver also runs the Zigzag bus service (Nov '16)
Support the case for a new railway station through information gathering, lobbying and responding to planning applications	£0	£10,000 (increased to max. £25,000 Apr '16)	Up to £11,000 committed	Evidence of lobbying and support	2	2 to 5	Ongoing	Corsham Station Town Team established Mar '16. Report commissioned Apr '16. CTC agreed to fund publicity material. CTC to pay for economic report Sept '16. Brief drafted Oct '16. On hold due to Gov announcement on deferral of electrification programme, Nov '16. WC to develop Wiltshire Rail Strategy, Nov '16. Discussions ongoing Jan '17. Sub-regional approach likely, with lead from Oxfordshire CC, Mar '17. Town Team Governance arrangements to be reviewed from May '17 following local elections
Support road safety initiatives through partnership funding where it will have the greatest effect	£5,000	£50,000	Approx. £30,000 as at Nov '16	Effective use of Property and Amenities Committee budget towards road safety measures	2	3	Ongoing	Regular CATG meetings to consider potential schemes. P&A Cttee consulted where funding and support is required. CTC has a Speed Indicator Device deployed from June '16
Complete development of the Corsham Cycle Network and promote its use	£25,000	£100,000	£5,200 committed as at Nov '16	Corsham Cycle Network completed and well used	2	4	Started - ongoing	Part done. Next phase is link to Rudloe. Discussions between WC and MOD ongoing Mar '16. Plan updated to reflect completed projects, July '16. Considered by P&A Cttee Sept '16. WC working on top three projects Sept '16. Ongoing, Mar '17. P&A agreed revised priority projects May '17
<b>Sub-total</b>	<b>£30,000</b>	<b>£179,000</b>	<b>£44,200</b>	<b>to date</b>				
<b>Theme: Safe and Healthy Community</b>								
<b>Action</b>	<b>From</b>	<b>To</b>	<b>Actual</b>	<b>Evaluation Measures</b>	<b>Priority (1 to 3)</b>	<b>Timeframe (yr 1 to 5)</b>	<b>Status</b>	<b>Comments</b>
Research the transport needs of young people to identify where improvements should be made	£0	£1,000		Research completed and shared. Services improved/needs met	3	4	Started - ongoing	Transport questions included in CYC survey Jan 16, results assessed. P&A Cttee considered Sept '16. Update to P&A Nov '16. Discussions with CYC Nov '16. Head of CS in contact with The Corsham School re survey (see Transport Monitoring Sheet) Jan '17. School survey results being analysed Mar '17. Further research underway May '17
Encourage public transport providers to provide service which meets the needs of young people	£0	£10,000		Public Transport for young people improved	3	4	Planned	P&A Cttee to consider how budget allocation might be used, Sept '16. Update to P&A Nov '16. To be considered once research completed
<b>Sub-total</b>	<b>£0</b>	<b>£11,000</b>	<b>£0</b>	<b>to date</b>				
<b>Theme: General</b>								
<b>Action</b>	<b>From</b>	<b>To</b>	<b>Actual</b>	<b>Evaluation Measures</b>	<b>Priority (1 to 3)</b>	<b>Timeframe (yr 1 to 5)</b>	<b>Status</b>	<b>Comments</b>
Asset Management Plan	£500	£2,000	£0	Asset Management Plan produced and adopted by CTC	1	1 to 2	Completed	Approved by P&A Cttee Nov '15.
Asset Transfer and Delegation of Services	£0	£200,000	Up to £28,000 committed at May '17	Assets and Services transferred to CTC	1 to 3	2 to 5	Started - ongoing	Transfer of public conveniences took place Apr 16. Further package of transfers to be considered in 2016. WC compiling information of list of assets and services July '16. Still awaiting information Nov '16. Delayed due to time taken on asset transfers in Salisbury. Being chased at Cabinet Member level, Jan '17. Deferred by WC until after May '17 elections. Transfer of Ladbroke Lane Old Cemetery and Katherine Park Green in hand Jun '17
<b>Sub-total</b>	<b>£500</b>	<b>£202,000</b>	<b>£23,000</b>	<b>to date</b>				

Completed
Years 1 to 3
Italic years 4 to 5

Council
Community Services
Property and Amenities

Agenda item 11.

## Corsham Town Council Transport Monitoring Sheet

Scheme	Action/Issue	Priority (1-3)	Time Frame (yr 1 to 5)*	Status	Comments
<b>Car Parking (off-street)</b>					
Car Parking Charges	Review and improve the pricing structure for off-street parking to encourage shoppers and visitors	1	1	done	CTC responded to Countywide Parking Review, Mar '15. Changes implemented Nov '15. Free parking days purchased in 2015, 2016 and 2017, Jan '17. To be reviewed after Jul '17.
Coach Parking	Enable the provision of coach parking facilities in Corsham town centre	1	2	started	Long term plan to include in Public Realm improvements. In the short-term the Campus is being used for ad hoc Coach visits in 2016, Jul '17.
<b>Car Parking (on-street)</b>					
On-street Parking	Review Traffic Regulation Orders and decide where they should be increased, amended or removed	2	4	ongoing	WC advertising Traffic Regulation Order Jun/Jul '17.
<b>Public Transport</b>					
Railway Station	Support the case for a new railway station through information gathering, lobbying and responding to planning applications	2	2 to 5	started	Corsham Station Town Team established Mar '16. Report commissioned Apr '16. Regular updates to Full Council from Jul '16. CTC budget agreed for publicity materials, studies and reports. Sub-regional approach likely with Oxford CC lead. Following the local elections, Terms of Reference for the Town Team have been drafted, Jul '17.
Bus Services Monitoring	Monitor and review bus routes and usage and encourage service providers to ensure the services meet the identified needs	3	4	started	Wiltshire Local Transport Plan, Public Transport Strategy Review underway, with severe cuts likely. Public Consultation ended in Apr 16. 231 and No10 service transferred to Faresaver in Apr 16. P&A Ctee agreed to research public transport issues for young people Sept '16. Research underway Nov '16. Faresaver also operates the zigzag bus, Nov '16. Research with young people via The Corsham School ongoing Jul '17.
Bus Services for young people	Encourage public transport providers to provide service which meets the needs of young people	3	4	started	To follow research to be carried out by Corsham Youth Council, survey completed Apr 16, results being analysed July 16. P&A considered Sept '16. Research underway Nov '16. Questionnaire constructed and to be placed on the Corsham School website Jan 17. Questionnaire results to be analysed, May '17. Due to low response, further work planned with The Corsham School Jul '17.
<b>Traffic Calming/Safety Improvements</b>					
Road Safety Initiatives	Support road safety initiatives through partnership funding where it will have the greatest effect	2	3	ongoing	Deployment of Speed Indicator underway from summer '16.
Bath Road/Bradford Road Junction	Bath Road – junction improvements at Bath Road/Bradford Road	2	3 to 4	in hand	This is due to happen as part of the Gladman Homes development, north of Bath Road. Plans approved and some work started on the development site summer '16. Further plans being considered Jul '17.
Heavy vehicle traffic in town centre	Monitor heavy traffic movement through the town centre and press for necessary improvements	3	5	not started	Not due to start until 2017/18. To be discussed Jul '17.
<b>Cycling &amp; Pedestrian Routes</b>					
Skynet Drive permissive path	Skynet Drive – permissive path for cyclists and pedestrians	1	2 to 3	started	WC and MOD working to make Skynet Drive a bridleway/permissive path. MOD Corsham closed Skynet Drive to vehicular traffic at Park Lane in 2017. Discussions over permissive path ongoing, Jul '17.
Corsham Cycle Network	Complete development of the Corsham Cycle Network and promote its use	2	4	ongoing	Top three priority schemes agreed by P&A May '17. Being progressed by WC, Jul '17. The schemes are Springfield/Campus signage, Spring Lane and Pickwick Road Crossing.

\* Year 1 = 2014 - 15

# Corsham Town Council

## Annual Site Visits 2017

Agenda item 12

The following Councillors were present at the annual site visits on 19 June 2017: Mrs D Anstis, C Fuller and M Jackson.

Apologies were received from: S Abbott, Ms L Bray, Mrs K Duckhouse, N Farmer and Mrs R Hopkinson.

### **The following items were identified:**

#### **Ladbrook Lane Cemetery**

No Observations

#### **Old Cemetery**

No Observations

#### **The Ridge Allotments**

No observations

#### **Dicketts Road Play Area**

The plans for the replacement surfacing were noted (Action: S Scott)

#### **Westwells Play Area**

Some pruning of tree branches identified to improve light levels through the site to combat algae (Action: I Newman)

#### **Remembrance Gardens**

Brambles to be removed from the hedge (Action: I Newman)

#### **Beechfield Nature Area**

Possibility of donating hay to an animal sanctuary rather than leaving on the ground (Action: Cllr C Fuller to make enquiries)

Improve area around the pond – possible project for Lackham College (Action: S Scott)

#### **Middlewick Allotments**

No Observations

Simon Scott

Head of Technical Services